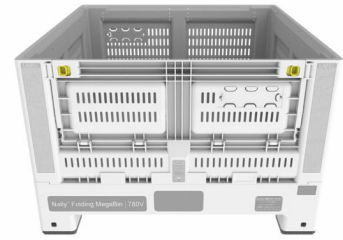


Nally Folding MegaBin[®] 780

Handling and Information Guide





Overview

An innovative new initiative for the next generation of Nally MegaBins®, is our space saving folding bin (**Nally Folding MegaBin®**), cleverly designed for the walls to fold down and collapse in on each other.

The Folding MegaBin® is designed for national logistics operations and is perfectly suited to asset pooling operations with Genius Tag™ - Track & Trace technology.

Engineered and made in Australia, the Folding MegaBin® range has been developed in collaboration with industry partners and built on decades of experience.

Built to offer a load capacity of 550kgs, and designed to reduce damage to your product and improve sustainability, the fully recyclable Folding MegaBins® from Pact, is a smart choice.

Key Features

- Lightweight, safe to handle and efficient to move and transport with a unique interlocking foot design the Folding MegaBin® is easy to align, stack, and store.
- Folds down to 280mm, creating space saving in storage and ideal for reverse logistics.
- Rounded corners and smooth interior surfaces, means less bruises, scuffs, abrasions, and cuts to produce.
- Hygienic & easy to clean, the Folding MegaBin's® smooth, nonporous surfaces are easy to sanitise and will not trap debris, breed bacteria, or absorb chemicals like timber bins.
- UV Stabilised and robust to withstand extreme Australian conditions with a longer life expectancy than timber bins.
- Multiple ventilation slots for superior air and water flow allows produce to cool faster and extend its shelf life.
- Traceability and Folding MegaBin® security identification methods include barcodes, RFID chip, custom branding and sequential numbering plus Genius Tag™ - Track & Trace location and temperature monitoring options.
- Compatible with all Folding MegaBins®.
- Beam racking compatible with a locking design mechanism.

Specifications

Folding MegaBin® 780	
External Height	780mm (280mm Collapsed)
External Width & Length	1162mm X 1162mm
Internal Height	635mm
Internal Width & Length	1090mm X 1082mm
Nominal Tare Weight	48kg
Maximum Load Capacity	550kg
Volume Capacity	750L
Maximum Static Stacking Weight	3600 kg
Maximum Dynamic Stacking Weight	1800 kg
Beam & Drive Through Stacking Weight	1200 kg
Ventilation Profiles	8mm / Solid
Recycled Material Compatible	Yes
Material	Polypropylene
Temperature Operating Range	-30 to +40 degrees Celcius (Refer to Operating Temperatures for additional information)
Yard Stacking Height (collapsed)	20 Folding MegaBins®
Truck Stacking Height (collapsed)	9 Folding MegaBins® (Closed Truck), 10 Folding MegaBins® (Flatbed Truck)
Customisation	Colour, Branding, Vented Sides, Drop Door, 4 Way Entry Foot, RFID, Genius Tag™ - Track & Trace plus Temperature Monitoring.

Safe Handling Practices

The following information provides a guide to the proper usage of the Folding MegaBin®.

In order to prevent injury or damage when handling the Folding MegaBin®, users are recommended to consult and follow the handling instructions prior to and during use.

Failure to adhere to the handling instructions may result in injury or damage to the product and property.

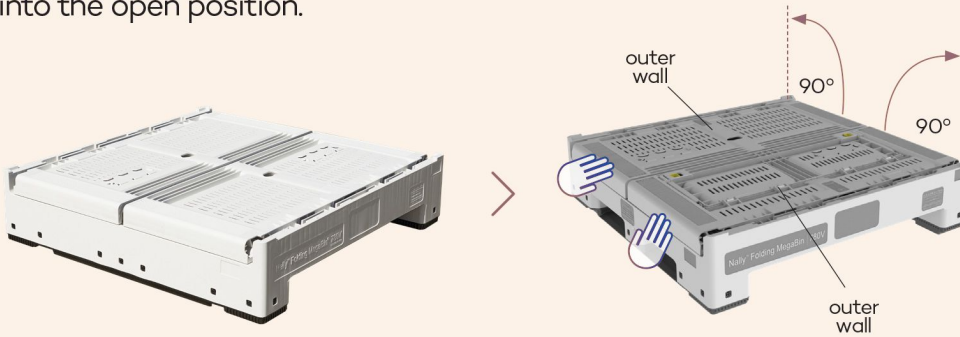
Moving parts of the Folding Megabin® may create pinch points or cause crush injuries. To avoid injury, handle with care at all times, especially during assembly, disassembly and operation of the drop door.

Manually lifting or moving the Folding MegaBin® may result in injury and is not recommended.

Damage to the product as a result of mishandling of the Folding MegaBin® may breach manufacturer warranty requirements and may incur charges for repair or replacement.

Folding MegaBin® Assembly from the folded position.

The Folding MegaBin® is made up of a base, 2 X outer side walls and 2 X inner side walls. In the folded position, the inner side walls are collapsed into the base and outer side walls fold over the top. To assemble the Folding MegaBin® the user must orientate themselves in the middle of the Folding MegaBin® with the outer wall hinges on either side. This way the outer walls can be lifted into the open position.



Step 1

Move the Folding MegaBin® to a safe location. Stand in a position where the outer walls can be opened to the left and right of the assembler. The outside wall is lifted through 90 degrees to vertical. Then the other wall is lifted through 90 degrees to vertical.



Step 2

With both outer walls at 90 degrees to the vertical, lift the closest inner wall through 90 degrees to the vertical position. Ensure the inner wall latches clip in place as the assembled inner wall interconnects with the assembled outer walls.

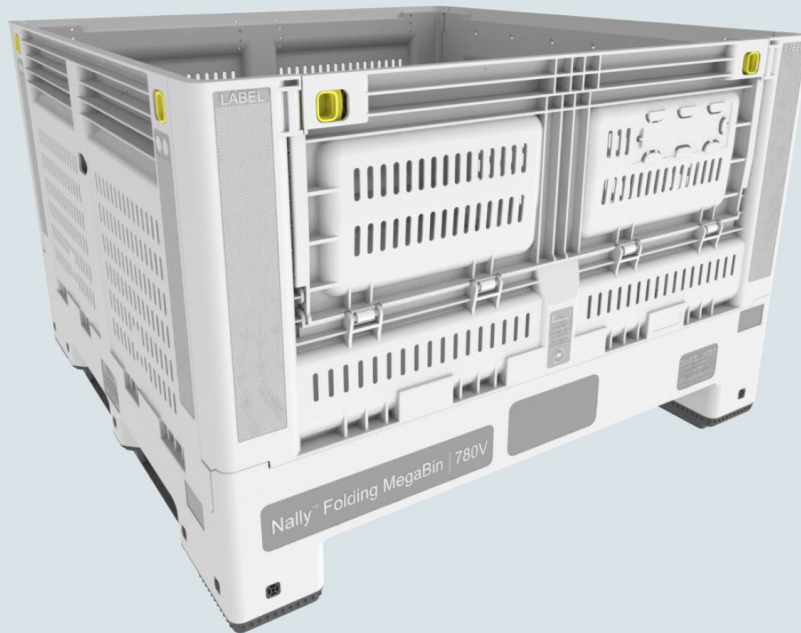


Step 3

Assemble the final inner wall and check that the latches are secure.

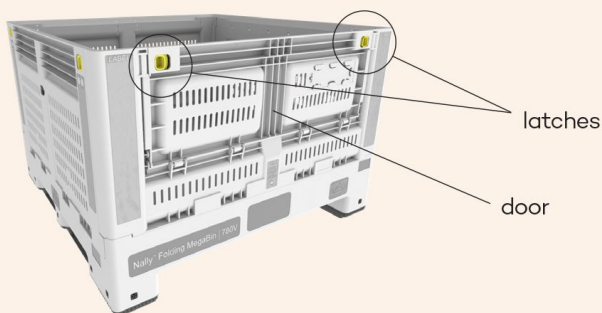


The Folding MegaBin® is now assembled and ready for use!



Folding Drop Doors

The Folding MegaBin® is available with and without folding drop doors.

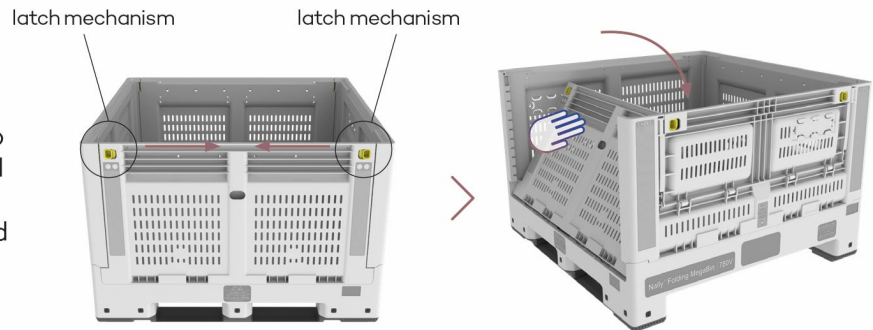


- The drop door is used for the loading / and unloading of product and when loading / unloading is finished, the drop door should be returned to it's closed position.
- The drop door should never be left open when the Folding MegaBin® is in transit or while placed in racking.
- Failure to do so may result in injury or damage to the product.
- The drop door is opened and closed using the door latches shown.
- To open the drop door place fore and middle finger in the drop door latch mechanisms and pull together.
- To close the drop door, lift the drop door about it's hinges until the latches engage, then push the door to lock the latches and door in place.
- Check the door is in the closed and in the locked position.

Collapsing the Folding MegaBin® from the assembled position.

Step 1

Place fore and middle fingers in the latch mechanisms on the top left and right of the side wall, and pull together. When the latches disconnect, push the wall forward allowing it to fall forward onto the base.



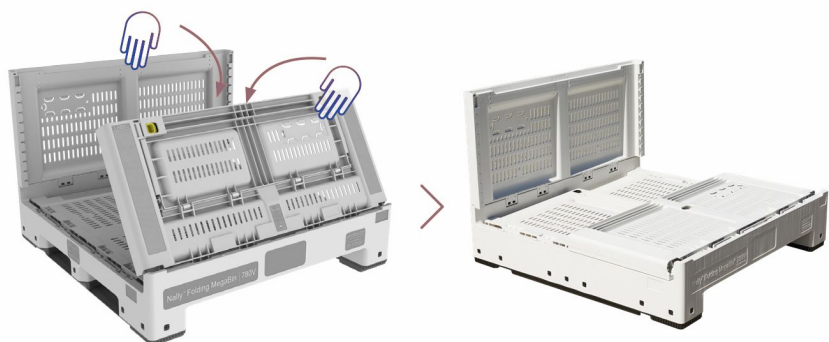
Step 2

Move to the opposite side of the Folding MegaBin® and repeat Step 1.

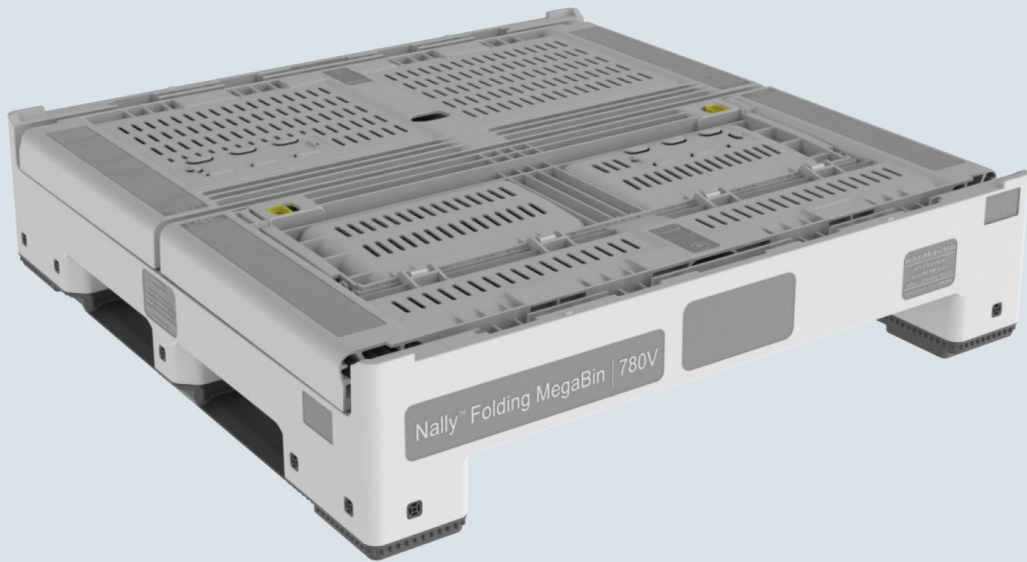


Step 3

When the inner side walls are collapsed, place your hands on the tops of the outer sidewalls. Collapse the side walls allowing them to fall gently onto the base.



The Folding MegaBin® is now collapsed and can be stacked on top of one another.



Folding MegaBin® Forklift Management

Stacking and Destacking

A forklift or appropriate materials handling device should always be used when stacking and destacking Folding MegaBin®.

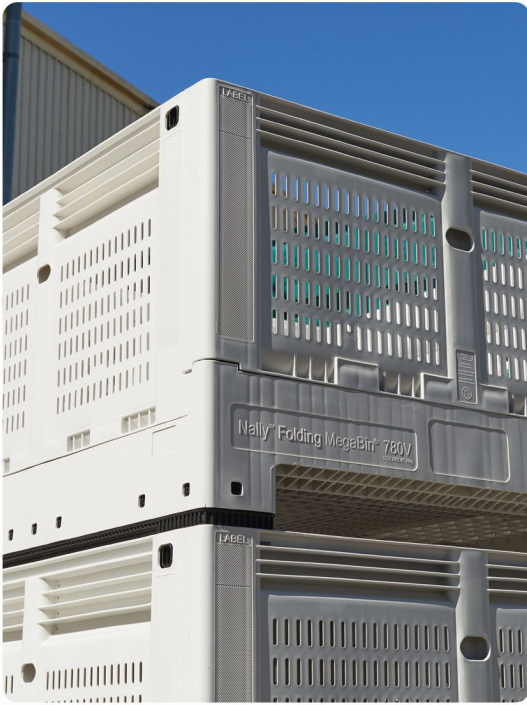
When lifting a Folding MegaBin® using a forklift, the following steps are recommended in addition to safe work practices involving forklifts:

1. Line the forklift up so it is directly in front of the Folding MegaBin®.
2. Ensure the tynes of the forklift are aligned with the Folding MegaBin® forklift entry tunnel.
3. Ensure the tynes are parallel with the Folding MegaBin® feet as they enter the tunnel.
4. Folding MegaBins® should be lifted vertically, clearing the Folding MegaBin® below, before moving the forklift away.

Failure to properly line up the forklift with the Folding MegaBin® may result in the tynes damaging the base, side walls or feet of the Folding MegaBin®.



- The Folding MegaBin® weighs approx. 48kg.
- When removing a Folding MegaBin® from a stack, the forklift driver should use care to ensure the tynes of the forklift do not damage the Folding MegaBin® below.
- Folding MegaBin® should always be stacked / positioned using the locators to ensure the weight of the stack is distributed through the load bearing column.



- Interstacking of Folding MegaBins® with incompatible bins and other brands is not recommended as it may result in a destabilising of the stack / load.
- Folding MegaBins® are designed with locators to facilitate the load stacking of compatible bins. Correct load stacking prevents the stack becoming unstable and reduces forward or lateral movement of the stack in transit.
- Folding MegaBins® should only be placed on a hard flat surface, clear of debris, before stacking / destacking to reduce the risk of the stack becoming unstable.
- The Folding MegaBins® should not be stacked or stored in areas susceptible to high winds.

Load & Racking Requirements

- The Folding MegaBin® is designed to carry a maximum load of 550kg. The maximum load should not exceed 550kg.
- The Folding MegaBin® has a static and dynamic load rating of 3600kgs (6 high) and 1800kgs (3 high) respectively, and a beam and drive through racking load of 1200kgs (2 high).

Operating Temperatures

- Operating temperature range for the Folding MegaBins® is -30 to +40 degrees celcius.
- Special care should be taken when handling the Folding MegaBin® in sub zero environments as the Folding MegaBins® are more brittle and susceptible to impact damage.
- The Folding MegaBin® should not be assembled or disassembled in sub zero temperatures.
- The Folding MegaBin® should never be used in environments where the temperature is below -30 degrees celcius.
- The Folding MegaBin® should only be stacked up to 6 high (in the assembled position) for a maximum of 30 days, in temperatures not exceeding 35 degrees celsius.
- The Folding MegaBin® should never be stacked in environments where the temperature is above 40 degrees celcius.

Transportation

- The Folding MegaBin® must be appropriately secured using strapping during all transportation of stacked Folding MegaBins®. Including assembled and loaded Folding MegaBins® and collapsed Folding MegaBins®. The strapping should be over the positions marked on each corner.
- Folding MegaBin® stacks must be correctly interlocked when the strapping is applied. Failure to do so may result in Folding MegaBins® or contents damage during transport.
- Strapping placed in the wrong location on the Folding MegaBin® may result in damage during transit.
- The Folding MegaBin® can be stacked 9 high on a closed truck, and 10 high on a flatbed truck in the collapsed position. The Folding Megabins® should always be secured during transport.



Storage

The Folding MegaBin® can be stored up to 20 high, when collapsed, and when placed on flat level surfaces that are free from debris.



Cleaning

- When cleaning the Folding MegaBin®, washing and drying temperatures should not exceed 80 degrees celsius.
- Folding MegaBins® should only be washed using Pact (VPS) approved chemicals.

User Responsibility

This Guide provides a guideline for the safe use and management of the Folding MegaBin®. It is the user's responsibility at all times to ensure the Folding MegaBin® is used in a safe manner. Pact does not accept any liability for damage incurred as a result of unsafe or improper use of the Folding MegaBin®.

Information provided in the Folding MegaBin® Handling and Information Guide does not vary the Terms of Purchase or Hire for the Folding MegaBins®

